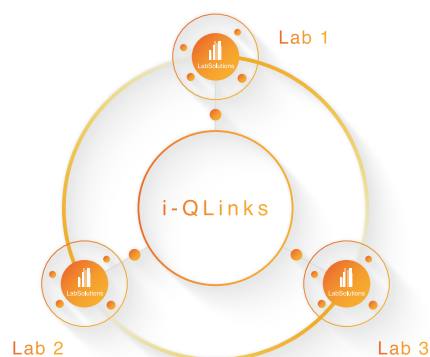


Integrated Laboratory Management System

# LabSolutions CS

Powered by i-QLinks





# New LabSolutions™ CS

Integrated Laboratory Management System



Comprehensive Management of Test/System/Asset Information

## Single Platform for Efficient Laboratory Operations

### Manage All Data and Information in the Laboratory

CS

i-QLinks

Data, operation logs, and other information from a wide variety of analytical instruments, including HPLC, GC, LC-MS, GC-MS, spectrophotometers such as IR and UV, elemental analysis instruments such as ICP-MS, testing machines, TOC analyzers, and balances, can be centrally managed on a server.

The Multi-Instrument Data Registration functionality centralizes the data and PDF reports generated by any 3rd party system automatically.

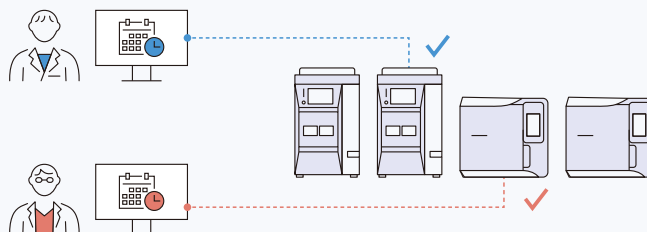
Furthermore, i-QLinks™ facilitates the seamless linkage between test/sample information and analytical data to provide efficient operations and traceability.



### Centralize All Assets in the Laboratory

i-QLinks

Instrument information for the whole laboratory can be centrally managed. This includes information for instruments that are not connected to a PC as well as those controlled by LabSolutions CS. By registering calibration records and scheduling information, you can understand the status of instruments at a glance, thereby improving the efficiency of testing operations and optimizing assets.



Smart Experience with Remote Control and Web Apps

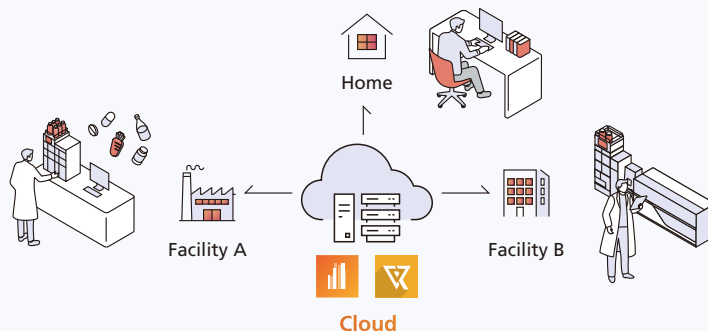
## Flexible Work Environment

### Remote Operations, Web Access and Cloud Support

CS

i-QLinks

Instruments and data can be accessed from client PCs in any location, such as the laboratory or office, enabling efficient analysis. i-QLinks enables administrators to verify the progress of tests and review analytical results, and approve reports in a web browser. In addition, by connecting sites and cloud environments through a secure network, a network that transcends locations can be built, enabling flexible work from anywhere.



Note: Data acquisition and data analysis operations are only supported for LC, GC, LCMS, and GCMS systems.

By integrating the robust analytical data system 'LabSolutions CS' with the test information management features of 'LabSolutions i-QLinks', laboratory operations are greatly enhanced.

This seamless combination consolidates various types of laboratory information into a single platform, fostering a sophisticated workflow that supports efficient and effective activities.



## Combining Analytical Data System and Test Information Management System

### Increased Productivity by Integrating Systems

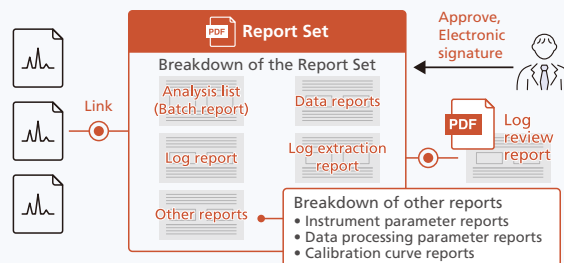
## Optimize Workflow from Analysis to Reports

CS

i-QLinks

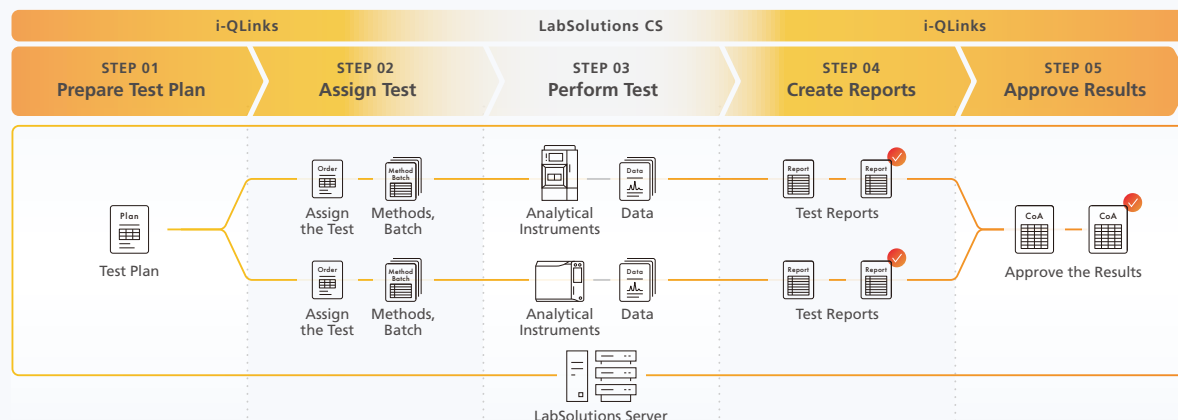
LabSolutions CS provides a consistent and comfortable operating environment. In addition to analytical operations, LabSolutions CS optimizes pre- and post-analytical schedules, including instrument conditioning and safe shutdown, that improve overall workflow efficiency.

The Report Set functionality makes it possible to check and electronically approve analytical results and operation logs in a single pdf file. This prevents data falsification and enables efficient paperless operation.



i-QLinks seamlessly links sample information and analysis conditions to analytical instruments for efficient testing. Data acquired from an analytical instrument is automatically transferred to a pre-configured spreadsheet template for creating test reports. This reduces the risk of falsification and human error, enabling highly reliable testing.

The combination of a robust data system with powerful test management functions enhances workflow efficiency and improves productivity.



## Smart Analytical Operations with the Latest AI Technologies

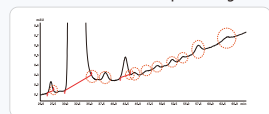
CS

The latest AI-powered optional software packages simplify analysis operations.

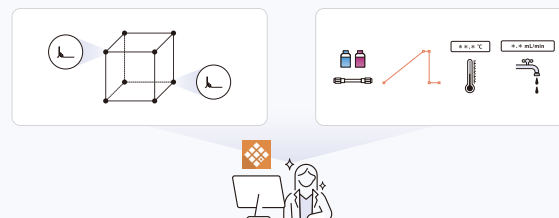
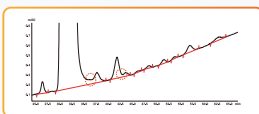
LabSolutions MD enables optimal method development with ease. It comprehensively examines and evaluates mobile phase and column combinations, and in as little as five minutes of initial setup, AI suggests optimal gradient conditions.



Time consuming and quality concerns in peak integration



Peakintelligence



Peakintelligence™ enables peak integration performed by experienced personnel with AI-assisted peak detection, eliminating the need of determining parameter settings and manual peak integration. This reduces variability in analytical results between users.

These optional software programs make analytical operations more efficient and reliable, and enable everyone to perform high-quality work.

## Package Contents

### LabSolutions CS Server Powered by i-QLinks

LabSolutions Server License
Test Information Management System LabSolutions i-QLinks
Multi Data Report Server License

### LabSolutions CS Server Powered by i-QLinks i-Package Edition

LabSolutions CS i-Package Server License
Test Information Management System LabSolutions i-QLinks
Multi Data Report (5 licenses)

## List of Software Product Brochures

LabSolutions DB/CS (C191-E018)
LabSolutions i-QLinks (C191-E057)
LabSolutions MD (C190-E278)

Effortless Method Development with LabSolutions MD (C190-E308)
Peakintelligence (C146-E418)
Peakintelligence for LC (C191-E059)

LabSolutions, LCMS, GCMS, i-QLinks, Peakintelligence are trademarks of Shimadzu Corporation or its affiliated companies in Japan and/or other countries.



Shimadzu Corporation  
[www.shimadzu.com/an/](http://www.shimadzu.com/an/)

#### For Research Use Only. Not for use in diagnostic procedures.

This publication may contain references to products that are not available in your country. Please contact us to check the availability of these products in your country.

Company names, products/service names and logos used in this publication are trademarks and trade names of Shimadzu Corporation, its subsidiaries or its affiliates, whether or not they are used with trademark symbol "TM" or "®".

Third-party trademarks and trade names may be used in this publication to refer to either the entities or their products/services, whether or not they are used with trademark symbol "TM" or "®".

Shimadzu disclaims any proprietary interest in trademarks and trade names other than its own.

The contents of this publication are provided to you "as is" without warranty of any kind, and are subject to change without notice. Shimadzu does not assume any responsibility or liability for any damage, whether direct or indirect, relating to the use of this publication.