

# Application News

## No. G301

### Gas Chromatography

## Rapid Analysis of Low Molecular Weight Cyclic Siloxanes Using a Backflush GC System

Silicone features many useful characteristics such as excellent heat resistance, chemical resistance and low toxicity, and is widely used in electrical and electronic devices. The silicone used in such products often contains cyclic siloxanes with low molecular weight, which may become a cause of conduction faults. Cyclic siloxanes are compounds comprising three or more linked siloxane units and indicated as D<sub>n</sub> with the "n" indicating the number of linked units. In many cases, the term low molecular weight cyclic siloxane refers to compounds with 3 (D3) to 10 (D10) linked siloxane units, and the total weight of such siloxanes from D3 to D10 is used as an index for quality standards.

Gas chromatography (GC) is frequently used to analyze low molecular weight cyclic siloxanes. However, the method has its drawbacks. Extracts from silicone products contain many components with high boiling points and the removal of such components from the column requires heating at a high temperature over a long period of time, which in turn elongates the analysis time. Furthermore, if the removal of components with high boiling points is insufficient, residues may be detected in the subsequent analysis.

This article introduces a backflush GC system which enables rapid analysis of low molecular weight cyclic siloxanes.

A. Miyamoto, S. Uchiyama

### Backflush GC System

The backflush GC system reverses the flow of the carrier gas so that after the target component is detected, components with high boiling points are discharged from the split vent (Fig. 1).

By connecting a backflush element and a resistance tube to the detector side of the column, the pressure on the detector side of the column is controlled using an advanced pressure controller (APC).

When using the backflush function, analysis is done normally until the target component is detected. Once it is detected, the pressure gradient is reversed by raising the pressure on the backflush element while lowering the pressure at the sample injection port. Components with high boiling points are removed from the column by the backflushing and this prevents contamination of the column and detector, making possible greatly shortened analysis times.

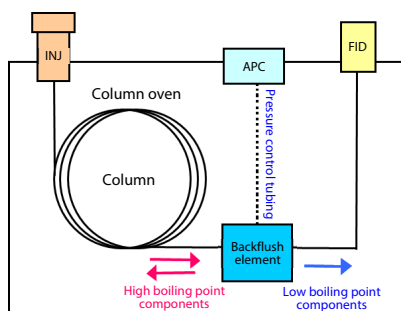


Fig. 1 Backflush GC System

### Pretreatment and Analysis Method

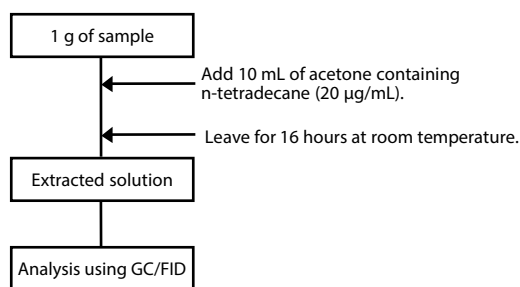


Fig. 2 Pretreatment Method for Silicone Products

A silicone sample of 1 g was prepared by adding 10 mL of acetone containing n-tetradecane (20 µg/mL) as an internal standard and leaving the solution for 16 hours at room temperature. The extracted solution was injected into a GC system.

The silicone extracted solution was analyzed using the SH-Rxi™ - 5 Sil MS column (30 m, 0.25 mm I.D., 0.25 µm) on a GC with a flame-ionization detector (GC/FID). Table 1 lists the normal measurement conditions and Table 2 lists the measurement conditions with a backflush GC system.

Table 1 Conditions for Normal Measurement (Without backflushing)

|                        |  |
|------------------------|--|
| Model                  | : Nexis™ GC-2030 AF/AOC-20i  |
| Column                 | : SH-Rxi™ - 5 Sil MS<br>(30 m × 0.25 mm I.D. df = 0.25 µm)   |
| Column Temp.           | : 60 °C (0 min) - 25 °C/min - 250 °C (0 min) -<br>15 °C/min - 300 °C (60 min)<br>Total : 70.93 min |
| Injection Temp.        | : 300 °C   |
| Carrier Gas            | : He, 40 cm/sec  |
| Injection Method       | : Split 1 : 15   |
| Carrier Gas Controller | : constant linear velocity mode (He)   |
| Injection Volume       | : 1.0 µL   |
| Detector               | : FID  |
| Detector Temp.         | : 320 °C   |

Table 2 Conditions for Measurement with Backflushing

|                        |   |
|------------------------|---|
| Model                  | : Nexis™ GC-2030 AF/AOC-20i   |
| Column                 | : SH-Rxi™ - 5 Sil MS<br>(30 m × 0.25 mm I.D. df = 0.25 µm)  |
| Column Temp.           | : 60 °C (0 min) - 25 °C/min - 250 °C (0 min) -<br>15 °C/min - 300 °C (1 min)<br>Total : 11.93 min |
| Injection Temp.        | : 300 °C  |
| Carrier Gas            | : He, 40 cm/sec   |
| Injection Method       | : Split 1 : 15  |
| Carrier Gas Controller | : constant linear velocity mode (He)  |
| Injection Pressure     | : 233.3 kPa (8 min) - 20 kPa  |
| APC Pressure           | : 100 kPa (8 min) - 225 kPa   |
| Injection Volume       | : 1.0 µL  |
| Detector               | : FID   |
| Detector Temp.         | : 320 °C  |

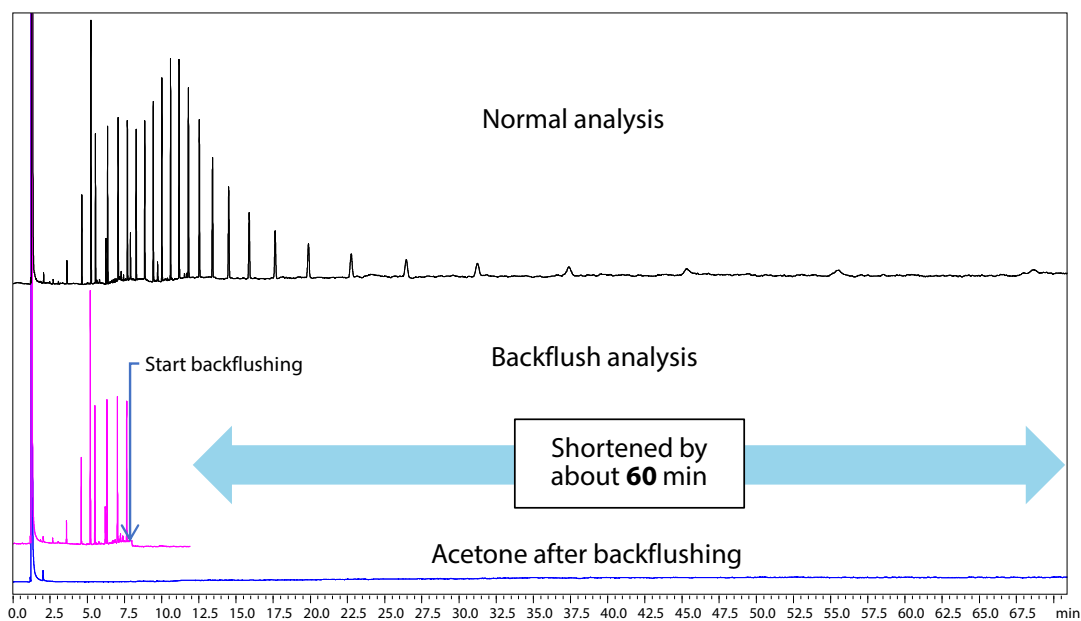


Fig. 3 Comparison of Chromatograms Obtained by GC/FID

### ■ Analysis Results of Cyclic Siloxanes

The extracted solution of a silicone product was analyzed by normal measurement and also by measurement with backflushing after the elution of D10 to compare the analysis results.

The two obtained chromatograms are shown superimposed on each other in Fig. 3. By normal measurement, the final temperature of the column may need to be maintained at 300 °C for 60 minutes in order to expel the siloxanes with high boiling points. For this particular sample, the total analysis time was about 71 minutes.

By measurement with backflushing, however, the total analysis time was shortened greatly by about 60 minutes to about only 12 minutes by backflushing the column to remove the components with high boiling points for about 4 minutes after the 8-minute point at which the D10 eluted.

A subsequent analysis of an acetone solvent after backflushing resulted in the detection of only the peak for acetone, indicating that the backflushing effectively removed the components with high boiling points from the column.

### ■ Reproducibility for Low Molecular Weight Cyclic Siloxanes

The chromatogram obtained from the measurement with backflushing is shown enlarged in Fig. 4. Table 3 indicates the %RSD (n=5) of the peak area values for the cyclic siloxanes with low molecular weight and tetradecane.

The %RSD of each peak area value is less than 1 % indicating favorable reproducibility.

Based on these results, we can see that the use of a backflush GC system can greatly shorten the time necessary for analyzing cyclic siloxanes with low molecular weight and thereby improve productivity sixfold.

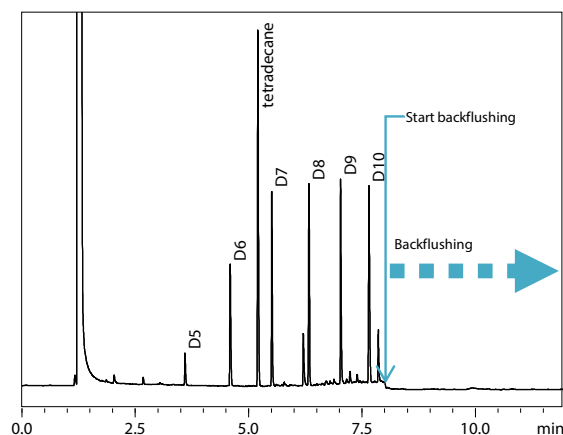


Fig. 4 Enlarged Chromatogram of Measurement with Backflushing

Table 3 Peak Area Reproducibility (%RSD, n = 5)

| Compounds   | Peak Area %RSD with Backflushing | Peak Area %RSD without Backflushing |
|-------------|----------------------------------|-------------------------------------|
| D5          | 0.47                             | 0.99                                |
| D6          | 0.48                             | 0.87                                |
| tetradecane | 0.33                             | 0.63                                |
| D7          | 0.49                             | 0.57                                |
| D8          | 0.48                             | 0.59                                |
| D9          | 0.39                             | 0.53                                |
| D10         | 0.48                             | 0.62                                |

Rxi is a registered trademark of Restek Corporation.

First Edition: May 2018



Shimadzu Corporation

www.shimadzu.com/an/

For Research Use Only. Not for use in diagnostic procedure.

This publication may contain references to products that are not available in your country. Please contact us to check the availability of these products in your country.

The content of this publication shall not be reproduced, altered or sold for any commercial purpose without the written approval of Shimadzu. Shimadzu disclaims any proprietary interest in trademarks and trade names used in this publication other than its own. See <http://www.shimadzu.com/about/trademarks/index.html> for details.

The information contained herein is provided to you "as is" without warranty of any kind including without limitation warranties as to its accuracy or completeness. Shimadzu does not assume any responsibility or liability for any damage, whether direct or indirect, relating to the use of this publication. This publication is based upon the information available to Shimadzu on or before the date of publication, and subject to change without notice.

© Shimadzu Corporation, 2018