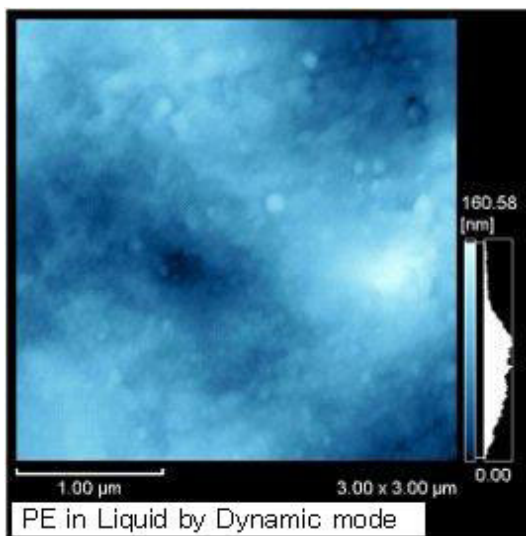
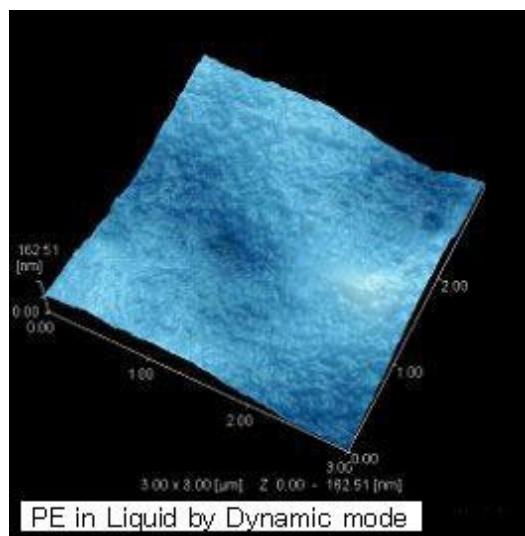


Observation of Polymer Surface in Liquid via SPM

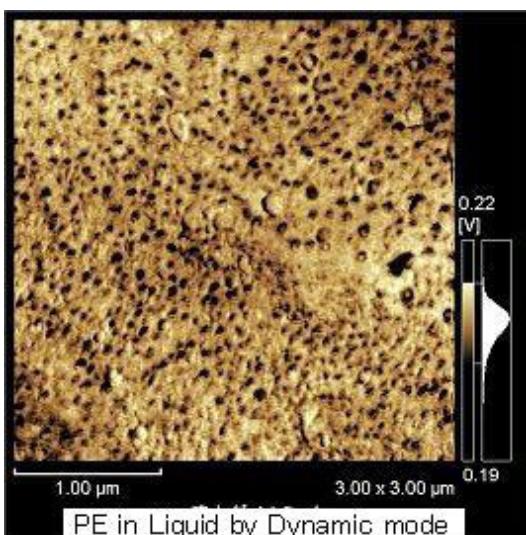
The surface of a polymer (polyethylene) is observed in liquid, and an image is generated of differences in solidity depending on microscopic form and viscoelasticity measurements. With SPM, viscoelasticity images (phase, elasticity and viscosity images) are obtainable not only in air but in liquid as well. As a result, the dispersion of additives in liquid can be clearly observed.



Roughness Image of Polymer Surface in Liquid



3D Image of Polymer in Liquid



Elasticity Image (COS Image) of Polymer in Liquid

In this image, soft additives are shown in black.